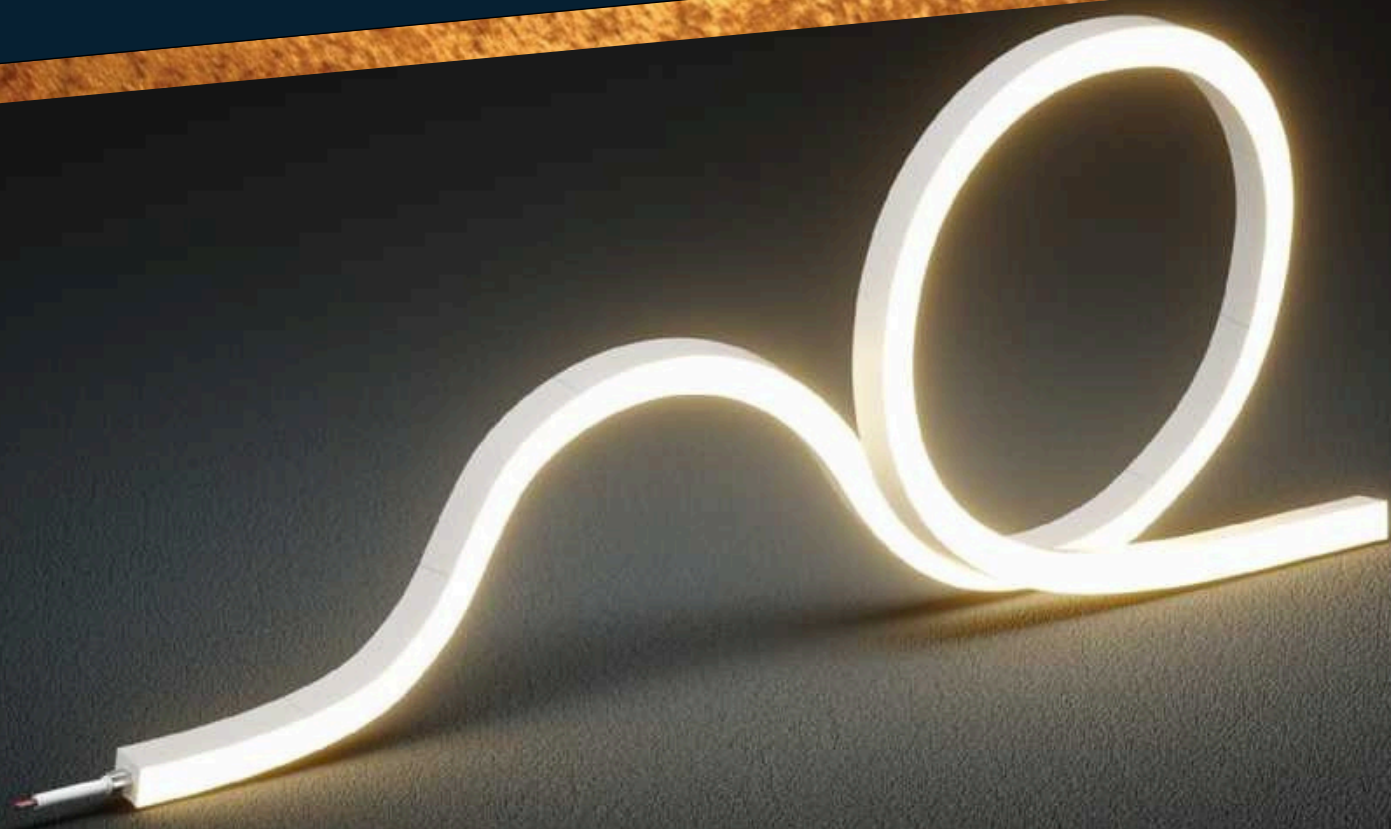


# AZURE

lighting solutions



## NEOFLEX MAXI HORIZONTAL NEON LIGHTS



CASAMBI



RGB



RGBW



RGBWW

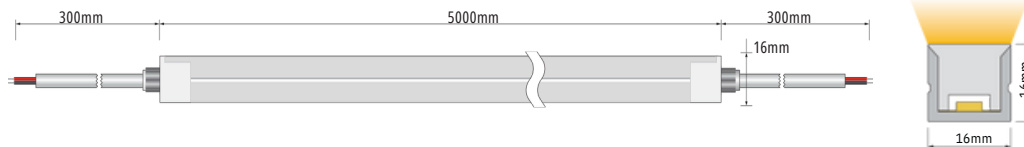


Tunable White

WWW.AZURELIGHTINGSOLUTIONS.COM

SYDNEY  
AUSTRALIA

## Product Specifications - Neoflex Horizontal Mono

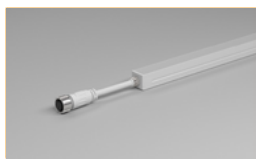


|                     |       |       |       |
|---------------------|-------|-------|-------|
| Wattage Per Meter:  | 5W    | 10W   | 15W   |
| Total Lumen Output: | 300lm | 540lm | 830lm |
| Max Run Length:     | 28m   | 20m   | 15m   |

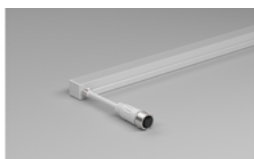
## General Specifications

|                                |   |
|--------------------------------|---|
| LED Type:                      | SMD Lumileds  |
| Bending Direction:             | Horizontal  |
| Cutting Increments:            | 50mm  |
| Binning:                       | 2 Step MacAdam  |
| Correlated Colour Temperature  | 2700K,3000K,3500K,4000K,5000K,6000K,6500K, Red, Green, Blue |
| Colour Rendering Index:        | >90   |
| R9 Value:                      | >50   |
| Light Distribution:            | Symmetric   |
| Ambient Operating Temperature: | -25° to 50°   |
| Input Voltage:                 | 24VDC (12VDC Optional)                                      |
| Control Gear:                  | Meanwell, TCI   |
| Control Options:               | Fixed Output, DALI, Push Dim,0-10V,Casambi                  |
| Protection Class:              | Class III   |
| Lumen Maintenance:             | L80 B10 54,000 Hours  |
| IP Rating:                     | IP67, IP68  |
| Warranty:                      | 5 Years   |

## Cable Entry Options



Front Cable Entry



Side Cable Entry

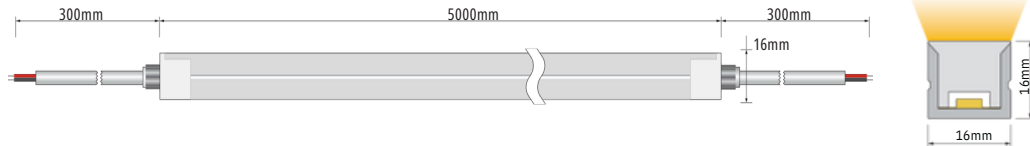


Bottom Cable Entry

Lumen values are based on CRI90 at CCT 3000K

All product specifications and data are subject to change without notice

## Product Specifications - Neoflex Horizontal Tunable White

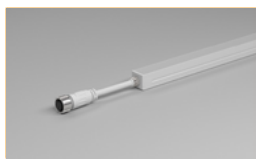


|                     |             |
|---------------------|-------------|
| Wattage Per Meter:  | 13W         |
| Total Lumen Output: | Up to 800lm |
| Max Run Length:     | 15m         |

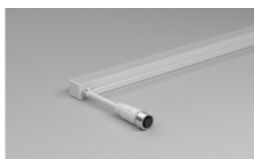
## General Specifications

|                                |                                      |
|--------------------------------|--------------------------------------|
| LED Type:                      | SMD Lumileds                         |
| Bending Direction:             | Horizontal                           |
| Cutting Increments:            | 72mm                                 |
| Binning:                       | 2 Step MacAdam                       |
| Correlated Colour Temperature  | Tunable White (2700K-5300K)          |
| Colour Rendering Index:        | >90                                  |
| R9 Value:                      | >50                                  |
| Light Distribution:            | Symmetric                            |
| Ambient Operating Temperature: | -25° to 50°                          |
| Input Voltage:                 | 24VDC (12VDC Optional)               |
| Control Gear:                  | Meanwell, TCI                        |
| Control Options:               | RF Controller, DALI 08, PWM, Casambi |
| Protection Class:              | Class III                            |
| Lumen Maintenance:             | L80 B10 54,000 Hours                 |
| IP Rating:                     | IP67, IP68                           |
| Warranty:                      | 5 Years                              |

## Cable Entry Options



Front Cable Entry



Side Cable Entry

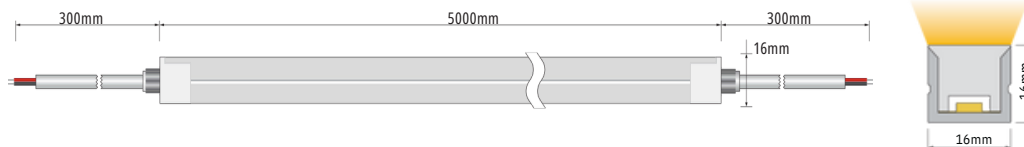


Bottom Cable Entry

Lumen values are based on CRI90 at CCT 3000K

All product specifications and data are subject to change without notice

## Product Specifications - Neoflex Horizontal - Colour

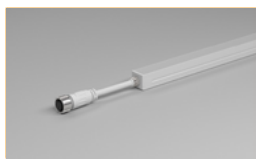


|                     |             |             |
|---------------------|-------------|-------------|
| Product Name:       | Colour.RGB  | Colour.RGBW |
| Wattage Per Meter:  | 13W         | 17W         |
| Total Lumen Output: | Up to 260lm | Up to 550lm |
| Max Run Length:     | 13m         | 9m          |

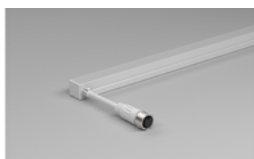
## General Specifications

|                                |                                     |
|--------------------------------|-------------------------------------|
| LED Type:                      | SMD Lumileds                        |
| Bending Direction:             | Horizontal                          |
| Cutting Increments:            | 83mm                                |
| Binning:                       | 2 Step MacAdam                      |
| Correlated Colour Temperature  | RGB,RGBW                            |
| Colour Rendering Index:        | >90                                 |
| R9 Value:                      | >50                                 |
| Light Distribution:            | Symmetric                           |
| Ambient Operating Temperature: | -25° to 50°                         |
| Input Voltage:                 | 24VDC (12VDC Optional)              |
| Control Gear:                  | Meanwell, TCI                       |
| Control Options:               | RF Controller, PWM, Casambi, DMX512 |
| Protection Class:              | Class III                           |
| Lumen Maintenance:             | L80 B10 54,000 Hours                |
| IP Rating:                     | IP67, IP68                          |
| Warranty:                      | 5 Years                             |

## Cable Entry Options



Front Cable Entry



Side Cable Entry

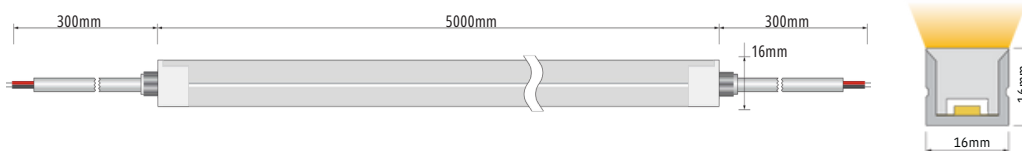


Bottom Cable Entry

Lumen values are based on CRI90 at CCT 3000K

All product specifications and data are subject to change without notice

## Product Specifications - Neoflex Horizontal - Vivid

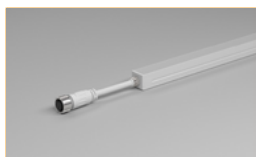


|                     |             |             |
|---------------------|-------------|-------------|
| Product Name:       | Vivid.RGB   | Vivid.RGBW  |
| Wattage Per Meter:  | 16W         | 22W         |
| Total Lumen Output: | Up to 310lm | Up to 480lm |
| Max Run Length:     | 15m         | 10m         |

## General Specifications

|                                |                        |
|--------------------------------|------------------------|
| LED Type:                      | SMD Lumileds           |
| Resolution:                    | 12 addresses per meter |
| Bending Direction:             | Vertical               |
| Cutting Increments:            | 83mm                   |
| Binning:                       | 2 Step MacAdam         |
| Colour Rendering Index:        | >90                    |
| R9 Value:                      | >50                    |
| Light Distribution:            | Symmetric              |
| Ambient Operating Temperature: | -25° to 50°            |
| Input Voltage:                 | 24VDC (12VDC Optional) |
| Control Gear:                  | Meanwell, TCI          |
| Control Options:               | SPI, DMX 512           |
| Protection Class:              | Class III              |
| Lumen Maintenance:             | L80 B10 54,000 Hours   |
| IP Rating:                     | IP67, IP68             |
| Warranty:                      | 5 Years                |

## Cable Entry Options



Front Cable Entry



Side Cable Entry



Bottom Cable Entry

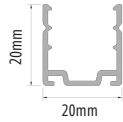
Lumen values are based on CRI90 at CCT 3000K

All product specifications and data are subject to change without notice

## Mounting Channels

### Surface Mount Channels

---



**NSM2020 - Standard Channel**

|            |                          |
|------------|--------------------------|
| Finish:    | Natural anodised, Custom |
| Dimension: | See Drawing              |

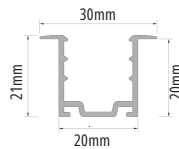


**NHF2020 - Flexible Channel**

|                |         |
|----------------|---------|
| Dimension(WxH) | 20x20mm |
|----------------|---------|

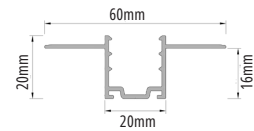
### Recessed Mount Channels

---



**NR2020 - Recessed Channel**

|            |                          |
|------------|--------------------------|
| Finish:    | Natural anodised, Custom |
| Dimension: | See Drawing              |



**NTR2020 - Trimless Channel**

|            |                          |
|------------|--------------------------|
| Finish:    | Natural anodised, Custom |
| Dimension: | See Drawing              |

### Mounting Clips

---



**NMC1725 - Mounting Clip**

|                  |            |
|------------------|------------|
| Dimension(LxWxH) | 25x20x20mm |
|------------------|------------|

Visit our website to view our full range of channel options

## Colour Rendering Index

The Color Rendering Index (CRI) serves as a metric to gauge how accurately a light source portrays the colors of various objects in a given space. Originally comprised of 8 sample colors, the CRI has expanded to 15 samples to provide a more comprehensive evaluation. Notably, within these samples, R9 to R15 focus on assessing special colors with high chroma. Specifically, R9 evaluates the rendering of red tones, while R15 is dedicated to evaluating the portrayal of skin tones. This extension of color samples, coupled with attention to high-chroma colors, enhances the precision in evaluating a light source's ability to faithfully reproduce a diverse range of colors.

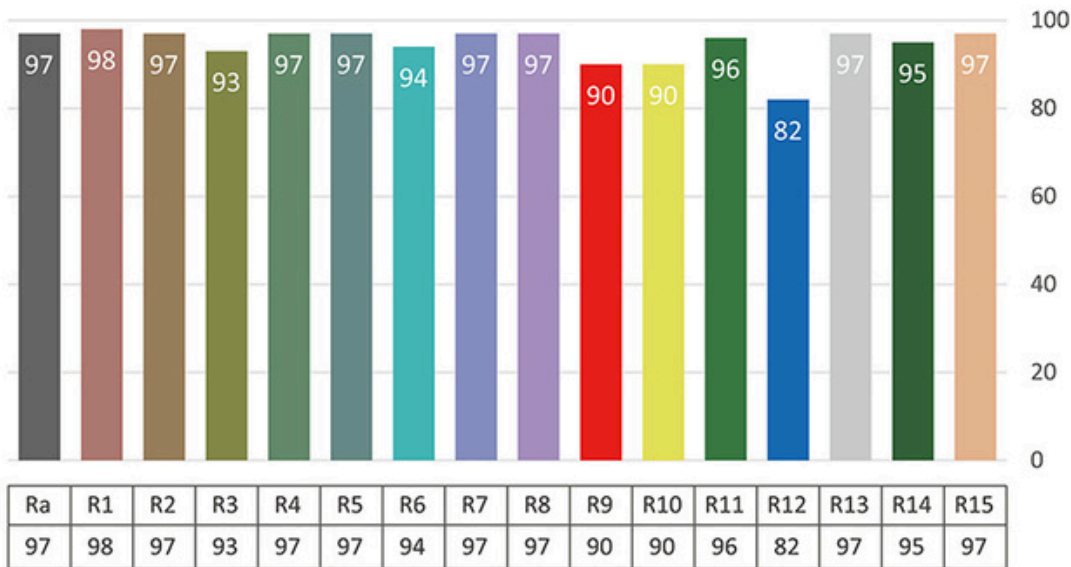
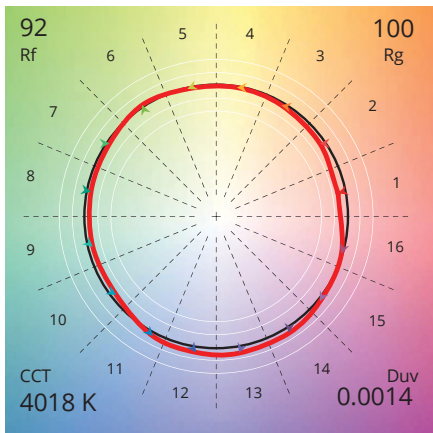


Fig 1 - Colour Rendering Index 4000K, CRI >95

**TM30** Rf 92  
Rg 100



## IES TM-30

TM-30 is the Illuminating Engineering Society (IES) Method for Evaluating Light Source Color Rendition, is a standard developed by the IES to assess the color rendering properties of light sources. It provides a comprehensive set of metrics and values that go beyond the traditional color rendering index (CRI), offering a more detailed and accurate understanding of how well a light source renders colors.

Fig 2 -Colour Vector Graphic 4000K, CRI >90