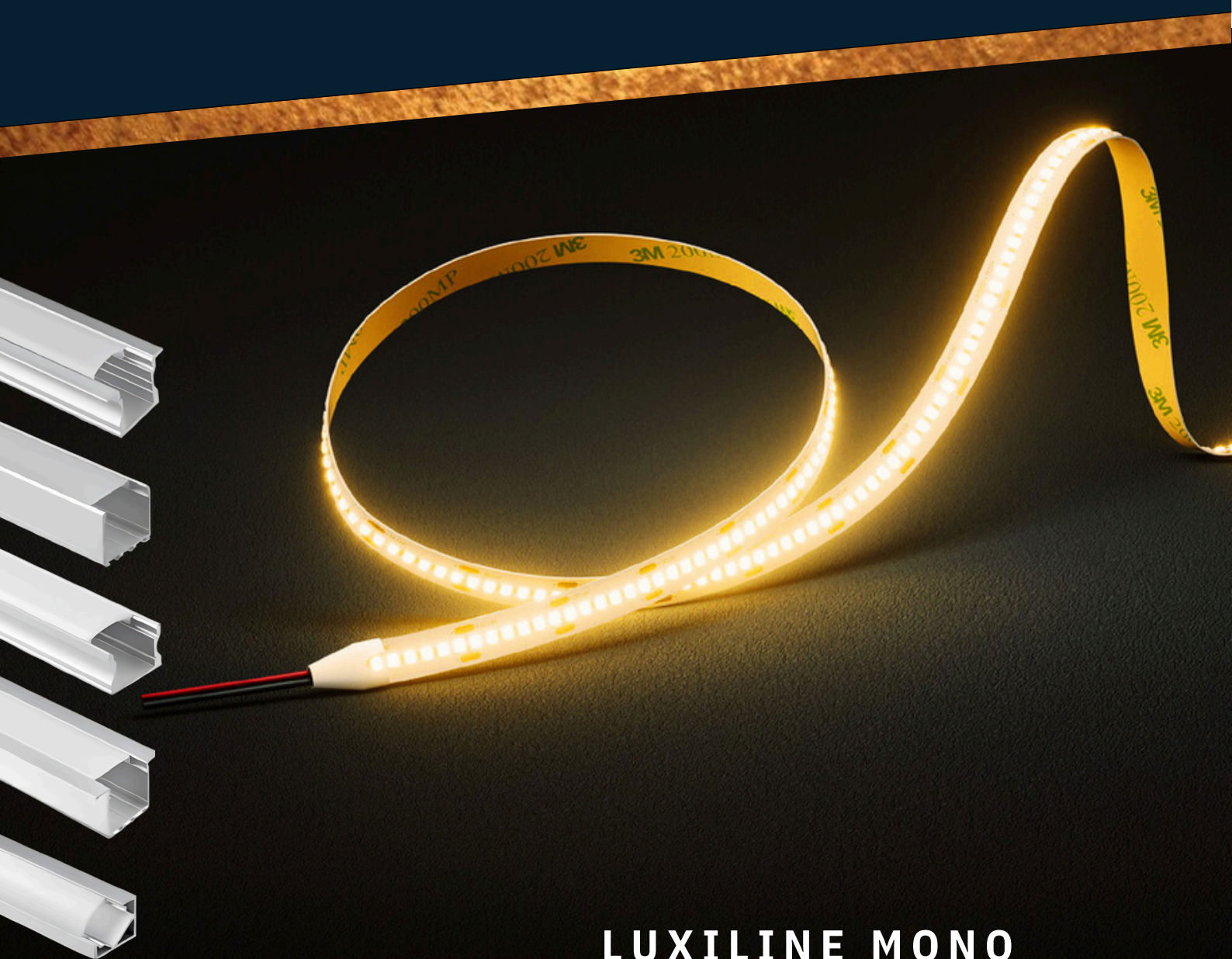


AZURE

lighting solutions



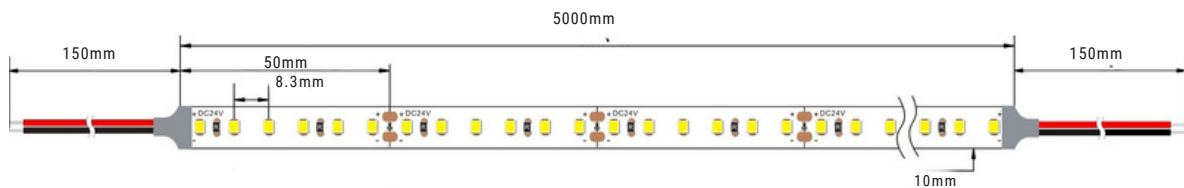
LUXILINE MONO Flexible Strip Lights



SYDNEY
AUSTRALIA

WWW.AZURELIGHTINGSOLUTIONS.COM

Product Specifications - ECO.120



Wattage Per Meter:	4.8W	9.6W	14.4W	19.2W	24W
Total Lumen Output:	480lm	968lm	1440lm	1950lm	2400lm

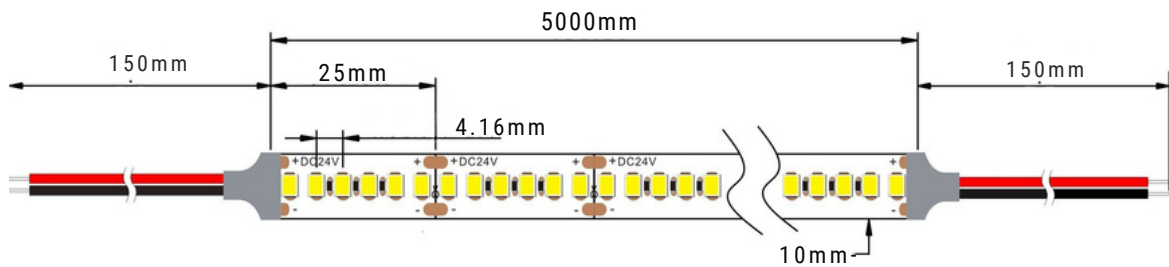
General Specifications

LED Type:	SMD 2835
LED Quantity:	120 LEDs per meter
Cutting Increments:	50mm
Binning:	3 Step MacAdam
Correlated Colour Temperature	2700K,3000K,3500K,4000K,5000K,6000K,6500K, Red, Green, Blue
Colour Rendering Index:	>90
R9 Value:	>50
Light Distribution:	Symmetric
Ambient Operating Temperature:	-25° to 50°
Input Voltage:	24VDC (12VDC Optional)
Control Gear:	Meanwell, TCI
Control Options:	Fixed Output, DALI, Push Dim,0-10V,Casambi
Protection Class:	Class III
Lumen Maintenance:	L80 B10 54,000 Hours
IP Rating:	IP20, IP65,IP68
Warranty:	5 Years

Lumen values are based on CRI90 at CCT 3000K

All product specifications and data are subject to change without notice

Product Specifications - ECO.240



Wattage Per Meter:	4.8W	9.6W	14.4W	19.2W	24W
Total Lumen Output:	480lm	968lm	1440lm	1950lm	2400lm

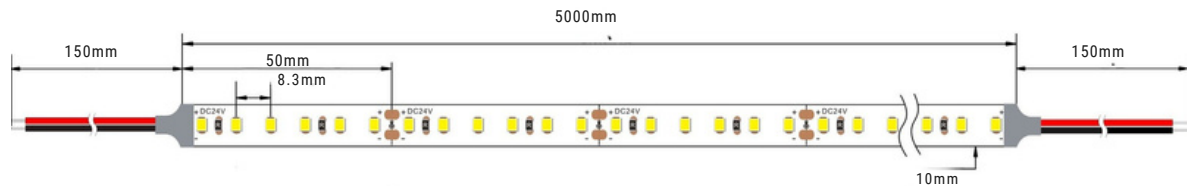
General Specifications

LED Type:	SMD 2835
LED Quantity:	240 LEDs per meter
Cutting Increments:	25mm
Binning:	3 Step MacAdam
Correlated Colour Temperature	2700K,3000K,3500K,4000K,5000K,6000K,6500K, Red, Green, Blue
Colour Rendering Index:	>90
R9 Value:	>50
Light Distribution:	Symmetric
Ambient Operating Temperature:	-25° to 50°
Input Voltage:	24VDC (12VDC Optional)
Control Gear:	Meanwell, TCI
Control Options:	Fixed Output, DALI, Push Dim,0-10V,Casambi
Protection Class:	Class III
Lumen Maintenance:	L80 B10 54,000 Hours
IP Rating:	IP20, IP65,IP68
Warranty:	5 Years

Lumen values are based on CRI90 at CCT 3000K

All product specifications and data are subject to change without notice

Product Specifications - PRO.120



Wattage Per Meter:	4.8W	9.6W	14.4W	19.2W	24W
Total Lumen Output:	672lm	1344lm	2016lm	2688lm	3360lm

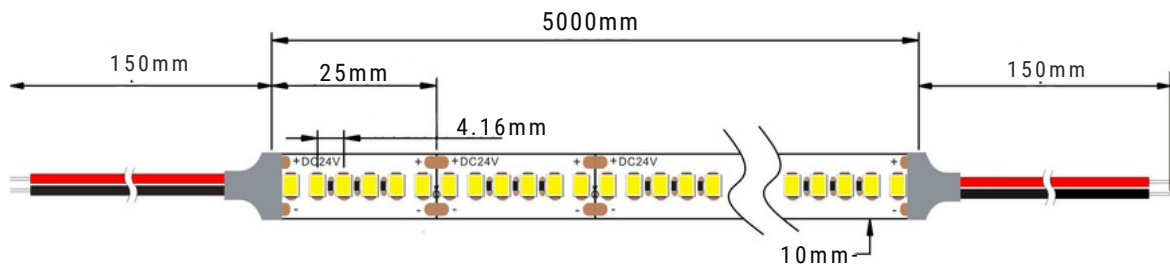
General Specifications

LED Type:	SMD 2835
LED Quantity:	120 LEDs per meter
Cutting Increments:	50mm
Binning:	3 Step MacAdam
Correlated Colour Temperature	2700K,3000K,3500K,4000K,5000K,6000K,6500K, Red, Green, Blue
Colour Rendering Index:	>90
R9 Value:	>50
Light Distribution:	Symmetric
Ambient Operating Temperature:	-25° to 50°
Input Voltage:	24VDC (12VDC Optional)
Control Gear:	Meanwell, TCI
Control Options:	Fixed Output, DALI, Push Dim,0-10V,Casambi
Protection Class:	Class III
Lumen Maintenance:	L80 B10 54,000 Hours
IP Rating:	IP20, IP65,IP68
Warranty:	5 Years

Lumen values are based on CRI90 at CCT 3000K

All product specifications and data are subject to change without notice

Product Specifications - PRO.240



Wattage Per Meter:	4.8W	9.6W	14.4W	19.2W	24W
Total Lumen Output:	672lm	1344lm	2016lm	2688lm	3360lm

General Specifications

LED Type:	SMD 2835
LED Quantity:	240 LEDs per meter
Cutting Increments:	25mm
Binning:	3 Step MacAdam
Correlated Colour Temperature	2700K,3000K,3500K,4000K,5000K,6000K,6500K, Red, Green, Blue
Colour Rendering Index:	>90
R9 Value:	>50
Light Distribution:	Symmetric
Ambient Operating Temperature:	-25° to 50°
Input Voltage:	24VDC (12VDC Optional)
Control Gear:	Meanwell, TCI
Control Options:	Fixed Output, DALI, Push Dim,0-10V,Casambi
Protection Class:	Class III
Lumen Maintenance:	L80 B10 54,000 Hours
IP Rating:	IP20, IP65,IP68
Warranty:	5 Years

Lumen values are based on CRI90 at CCT 3000K

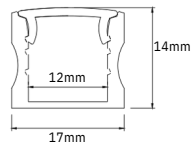
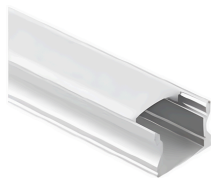
All product specifications and data are subject to change without notice

Aluminium Channels

Finish Natural Anodised, White, Black, Custom

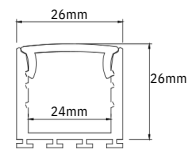
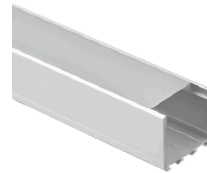
Diffuser Clear, Semi Frosted, Opal

Surface Mount Channels



SM17

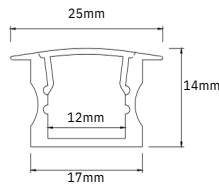
Internal Width	12mm
Dimension(WxH)	17x14mm



SM26

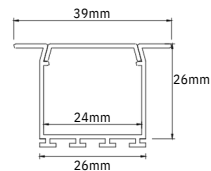
Internal Width	24mm
Dimension(WxH)	26x26mm

Recessed Mount Channels



REC25

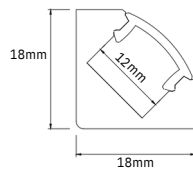
Internal Width	12mm
Dimension(WxH)	17x25mm



REC39

Internal Width	24mm
Dimension(WxH)	26x26mm

Corner Mount Channel



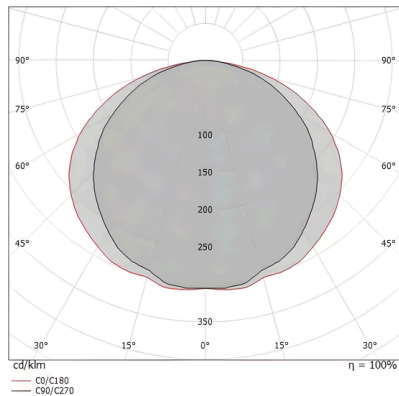
CORNER18

Internal Width	12mm
Dimension(WxH)	See drawing

Contact sales to view our full range of available channels

Photometrics

110° BEAM ANGLE



Specifications Code

Luxline.Mono. E. 120. 4. 927. N. 20

E=ECO
P=PRO

120=120
240=240

4=4.8W
9=9.6W
14=14.4W
19=19.2W
24=24W

927=2700K
930=3000K
940=4000K
965=6500K

N=NON DIM
D=DALI
P=PUSH DIM
0=0-10V
C=CASAMBI

20=IP20
65=IP65
68=IP68

Colour Rendering Index

The Color Rendering Index (CRI) serves as a metric to gauge how accurately a light source portrays the colors of various objects in a given space. Originally comprised of 8 sample colors, the CRI has expanded to 15 samples to provide a more comprehensive evaluation. Notably, within these samples, R9 to R15 focus on assessing special colors with high chroma. Specifically, R9 evaluates the rendering of red tones, while R15 is dedicated to evaluating the portrayal of skin tones. This extension of color samples, coupled with attention to high-chroma colors, enhances the precision in evaluating a light source's ability to faithfully reproduce a diverse range of colors.

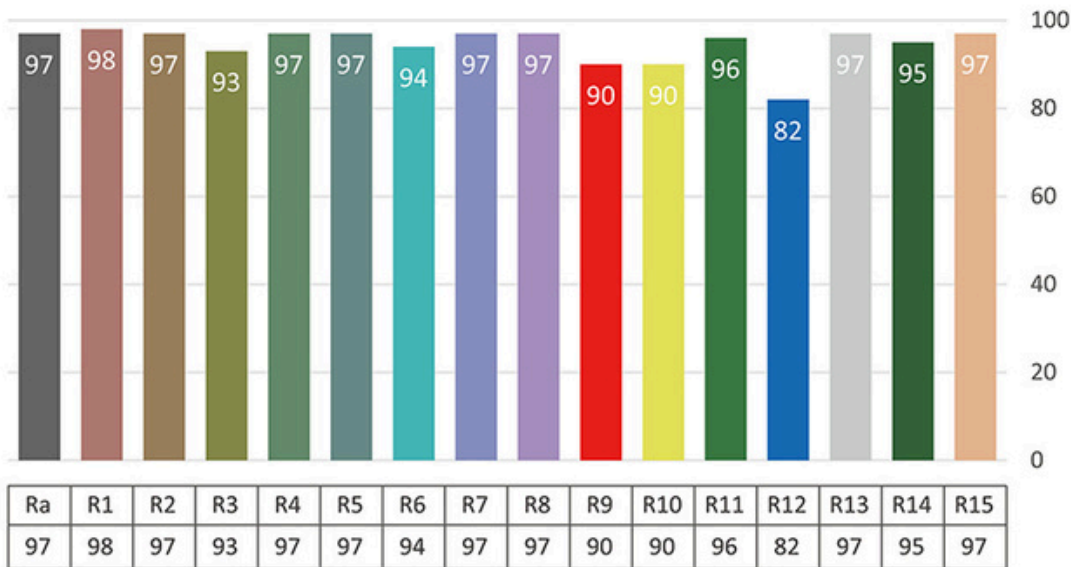
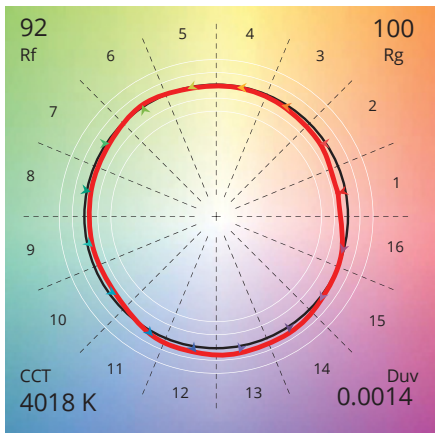


Fig 1 - Colour Rendering Index 4000K, CRI >95

TM30 Rf 92
Rg 100



IES TM-30

TM-30 is the Illuminating Engineering Society (IES) Method for Evaluating Light Source Color Rendition, is a standard developed by the IES to assess the color rendering properties of light sources. It provides a comprehensive set of metrics and values that go beyond the traditional color rendering index (CRI), offering a more detailed and accurate understanding of how well a light source renders colors.

Fig 2 -Colour Vector Graphic 4000K, CRI >90