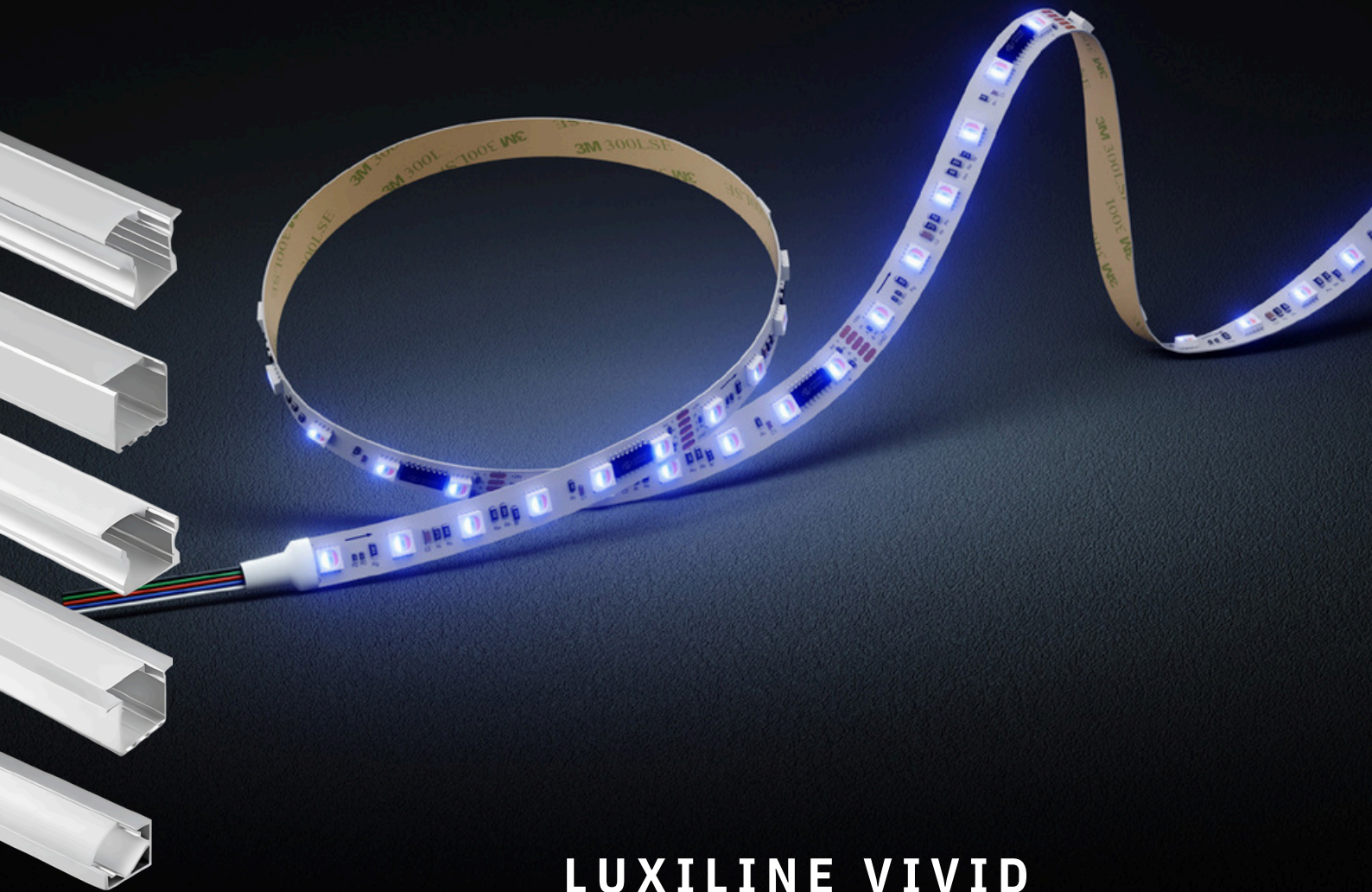


AZURE

lighting solutions



LUXILINE VIVID Colour Strip Lights



CASAMBI



RGB



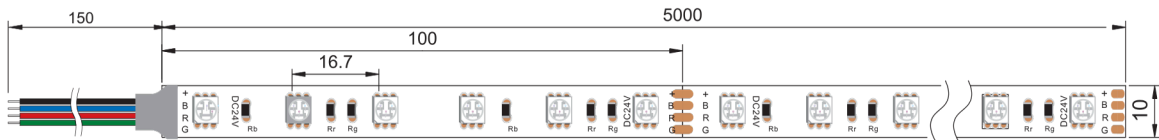
RGBW



RGBWW

WWW.AZURELIGHTINGSOLUTIONS.COM

Basic Series



Product Name:	Basic.RGB	Basic.RGBW	Basic.RGBWW
Wattage per meter:	14.4W	14.4W	19.2W
Total Lumen Output:	Up to 670lm	Up to 705lm	Up to 1200lm

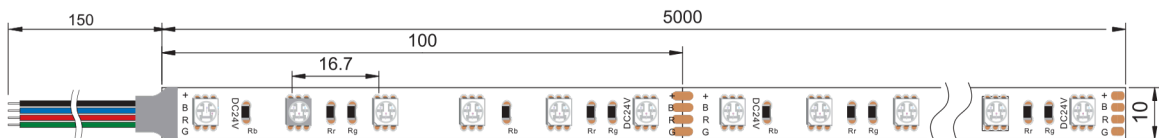
General Specifications

LED Type:	SMD 5050
LED Quantity:	60 LEDs per meter
Cutting Increments:	100mm
Binning:	3 Step MacAdam
Correlated Colour Temperature (White)	2700K,3000K,3500K,4000K,5000K,6000K,6500K
Light Distribution:	Symmetric
Ambient Operating Temperature:	-25° to 50°
Input Voltage:	24VDC (12V Optional)
Control Gear:	TCI ,Meanwell
Control Options:	RF Controller, PWM, Casambi
Protection Class:	Class III
Lumen Maintenance:	L80 B10 54,000 Hours
IP Rating:	IP20, IP65,IP68
Warranty:	5 Years

Lumen values are based on CRI90 at CCT 3000K

All product specifications and data are subject to change without notice

Digital DMX Series



Product Name:	DMX.RGB	DMX.RGBW	DMX.RGBW
Wattage per meter:	14.4W	18W	23W
Total Lumen Output:	Up to 450lm	Up to 695lm	Up to 995lm

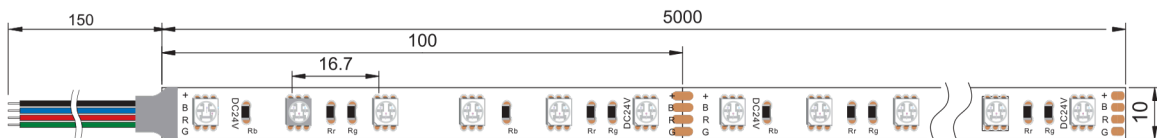
General Specifications

LED Type:	SMD 5050
Resolution:	10 Addresses per meter
LED Quantity:	60 LEDs per meter
Cutting Increments:	100mm
Binning:	3 Step MacAdam
Correlated Colour Temperature (White)	2700K,3000K,3500K,4000K,5000K,6000K,6500K
Light Distribution:	Symmetric
Ambient Operating Temperature:	-25° to 50°
Input Voltage:	24VDC (12V Optional)
Control Gear:	TCI ,Meanwell
Control Options:	DMX512
Protection Class:	Class III
Lumen Maintenance:	L80 B10 54,000 Hours
IP Rating:	IP20, IP65,IP68
Warranty:	5 Years

Lumen values are based on CRI90 at CCT 3000K

All product specifications and data are subject to change without notice

Digital SPI Series



Product Name:	SPI.RGB	SPI.RGBW	SPI.RGBW
Wattage per meter:	14.4W	18W	23W
Total Lumen Output:	Up to 450lm	Up to 695lm	Up to 1000lm

General Specifications

LED Type:	SMD 5050
Resolution:	10 Addresses per meter
LED Quantity:	60 LEDs per meter
Cutting Increments:	100mm
Binning:	3 Step MacAdam
Correlated Colour Temperature (White)	2700K,3000K,3500K,4000K,5000K,6000K,6500K
Light Distribution:	Symmetric
Ambient Operating Temperature:	-25° to 50°
Input Voltage:	24VDC (12V Optional)
Control Gear:	TCI ,Meanwell
Control Options:	DMX512
Protection Class:	Class III
Lumen Maintenance:	L80 B10 54,000 Hours
IP Rating:	IP20, IP65,IP68
Warranty:	5 Years

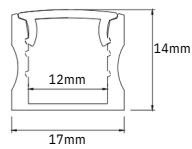
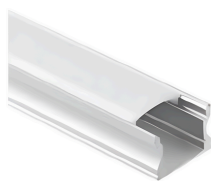
Lumen values are based on CRI90 at CCT 3000K

All product specifications and data are subject to change without notice

Aluminium Channels

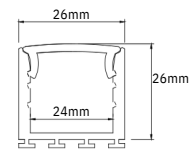
Finish	Natural Anodised, White, Black, Custom
Diffuser	Clear, Semi Frosted, Opal

Surface Mount Channels



S601

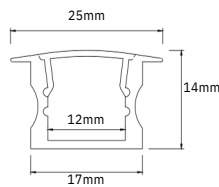
Internal Width	12mm
Dimension(WxH)	17x14mm



S602

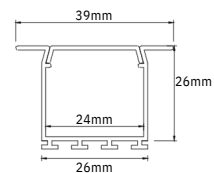
Internal Width	24mm
Dimension(WxH)	26x26mm

Recessed Mount Channels



R501

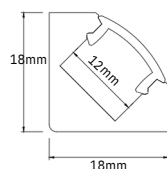
Internal Width	12mm
Dimension(WxH)	17x25mm



S602

Internal Width	24mm
Dimension(WxH)	26x26mm

Corner Mount Channel



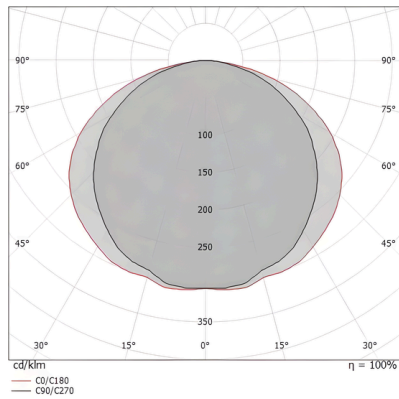
C701

Internal Width	12mm
Dimension(WxH)	17x25mm

Visit our website to view our full range of channel options

Photometrics

110° BEAM ANGLE



Specifications Code

Luxline.Vivid. B. RGB. W27. 20

B=Basic
DMX=DMX512
SPI=SPI

RGB=RGB
RGBW=RGBW
RGBWW=RGBWW

W27=2700K
W30=3000K
W40=4000K
W65=6500K

20=IP20
65=IP65
68=IP68

Colour Rendering Index

The Color Rendering Index (CRI) serves as a metric to gauge how accurately a light source portrays the colors of various objects in a given space. Originally comprised of 8 sample colors, the CRI has expanded to 15 samples to provide a more comprehensive evaluation. Notably, within these samples, R9 to R15 focus on assessing special colors with high chroma. Specifically, R9 evaluates the rendering of red tones, while R15 is dedicated to evaluating the portrayal of skin tones. This extension of color samples, coupled with attention to high-chroma colors, enhances the precision in evaluating a light source's ability to faithfully reproduce a diverse range of colors.

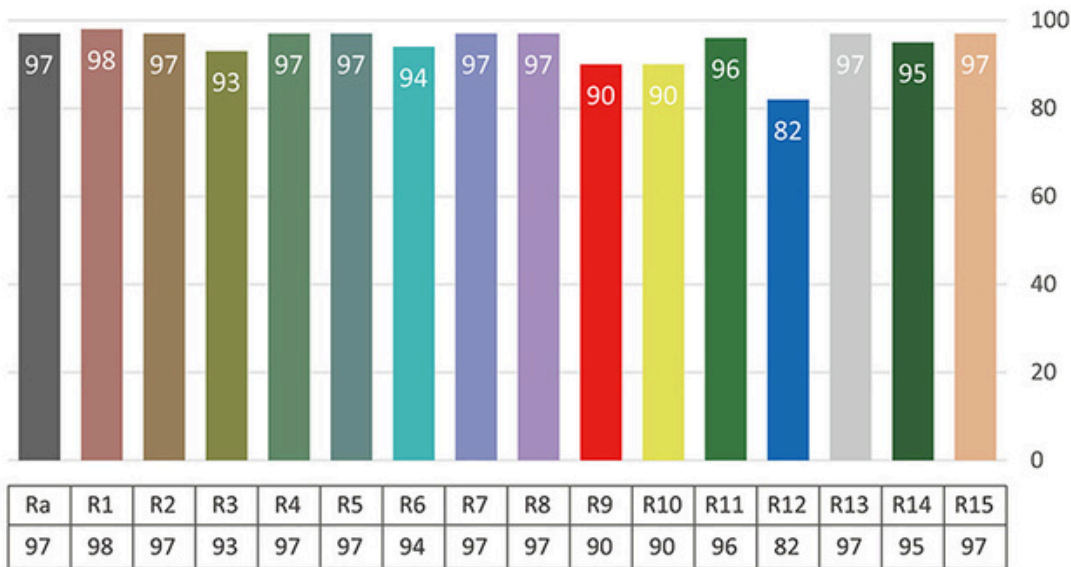
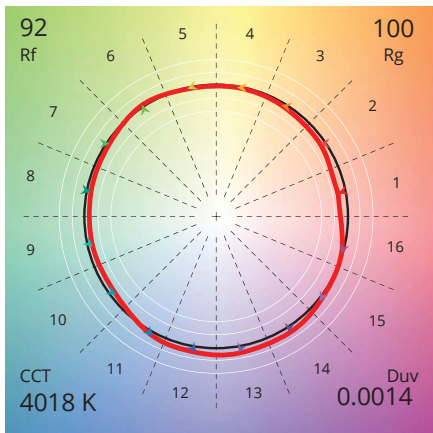


Fig 1 - Colour Rendering Index 4000K, CRI >95

TM30 Rf 92
Rg 100



IES TM-30

TM-30 is the Illuminating Engineering Society (IES) Method for Evaluating Light Source Color Rendition, is a standard developed by the IES to assess the color rendering properties of light sources. It provides a comprehensive set of metrics and values that go beyond the traditional color rendering index (CRI), offering a more detailed and accurate understanding of how well a light source renders colors.

Fig 2 -Colour Vector Graphic 4000K, CRI >90