

# AZURE

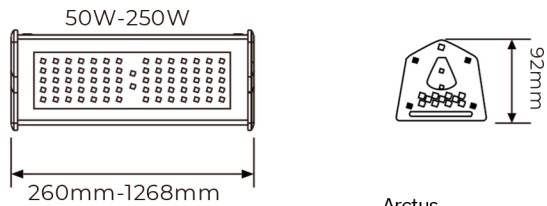
lighting solutions



## Arctus Linear Highbay



SYDNEY  
AUSTRALIA  
[WWW.AZURELIGHTINGSOLUTIONS.COM](http://WWW.AZURELIGHTINGSOLUTIONS.COM)



Product Name:	Arctus
Power Consumption:	50W-250W
Total luminous flux:	9500lm to 45600lm
Beam Angles:	50°,80°,30*100°,40*150°
Standard Lengths:	260mm,512mm,764mm,1016mm,1268mm

## General Specifications

Fixture Material:	Die Cast Aluminium
Finish:	Black,Custom
Mounting:	Suspended, Surface
LED Type:	Lumileds
Binning:	3 Step MacAdam
Correlated Colour Temperature	3000K, 4000K, 5000K, 6000K
Colour Rendering Index:	>80
Ambient Operating Temperature:	-25° to 50°
Driver:	Meanwell
Driver Input Voltage:	220-240VAC 50-60Hz
Control Options:	Non Dim, 0-10V, DALI, PIR, MW Sensor, Zigbee, Smart App Control
THD:	<10%
Surge Protection:	10KV
Lumen Maintenance:	L80 B10 100,000 Hours
Sockets:	Zhaga Base
IP Rating:	IP66
IK Rating:	IK10
Warranty:	10 Years

## Features

Zhaga Socket - Sensor



Surface Mount U Bracket



Surface Mount L Brackets



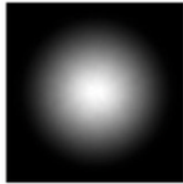
1m suspension chain



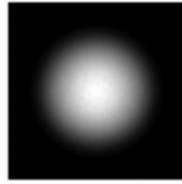
Lumen values are based on CRI80 at CCT 4000K

All product specifications and data are subject to change without notice

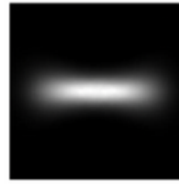
## Photometry



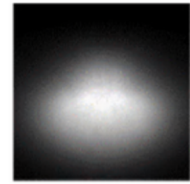
50°



80°



30\*100°



40\*150°

## Specification Code

Arctus. 260 . 50 . 66 . 830 N . 50 . B

**260=260mm**  
512=512mm  
762=762mm  
1016=1016mm  
1266=1266mm

**50=50W**  
100=100W  
150=150W  
200=200W  
250=250W

**66=IP66**

**830=3000K**  
840=4000K  
850=5000K  
860=6000K

**N=NON DIM**  
D=DALI  
O=0-10V  
Z=Zigbee  
MS=Microwave Sensor  
PS=PIR Sensor

**50=50°**    **B=BLACK**  
80=80°  
AS1=30\*100°  
AS2=40\*150°

## Accessories

+ U. L. S.



Surface Mount U Bracket



Surface Mount L Brackets



1m suspension chain